

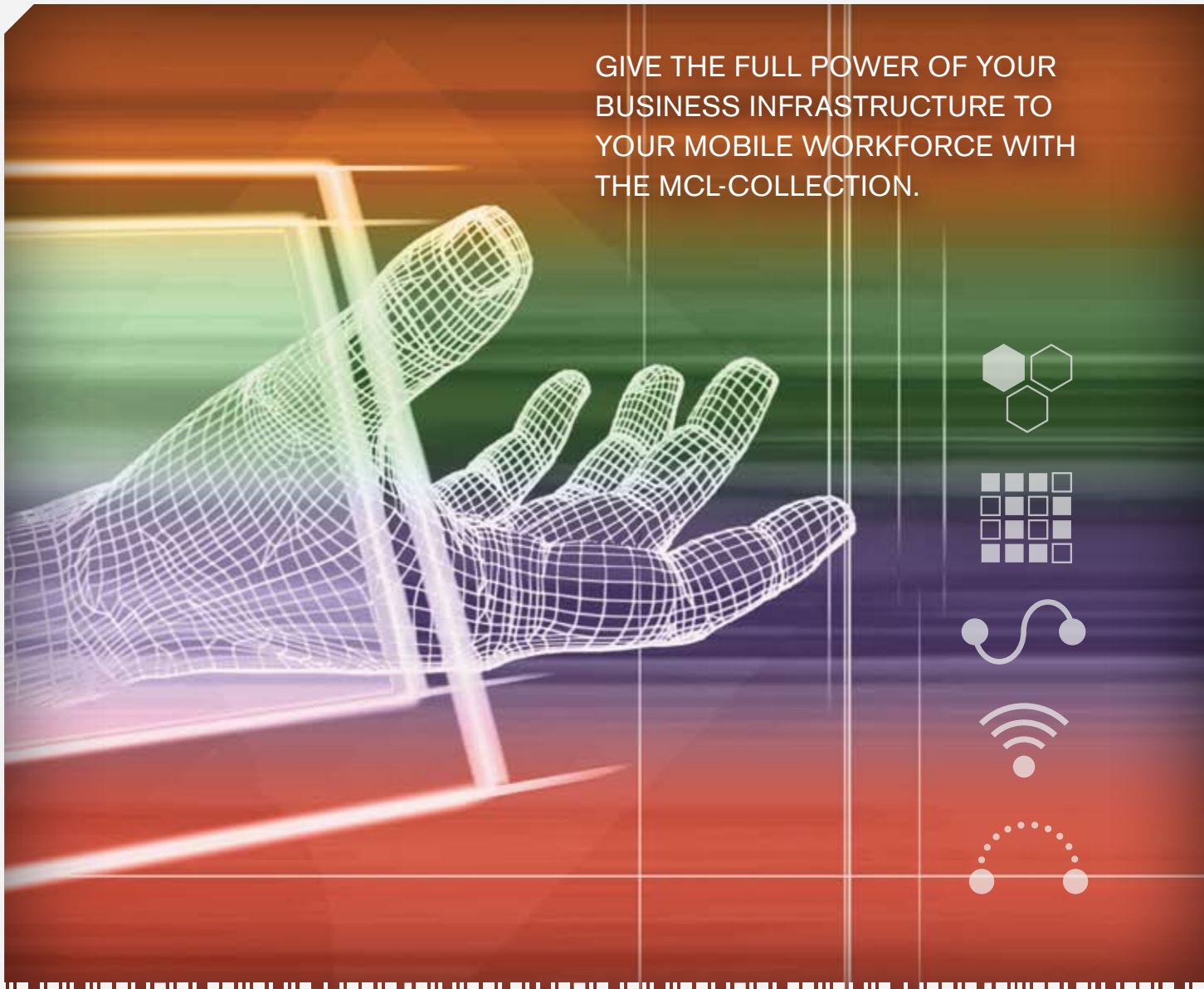
MCL-Collection

FOR CIPHERLAB WINDOWS®-BASED MOBILE COMPUTERS

» Maximize mobile workforce productivity, quickly, easily and economically. The MCL-Collection for CipherLab Windows®-based mobile computers simplifies and accelerates your mobile application development and deployment efforts, allowing fast integration of highly effective host-based applications into your computers.

The Collection provides a comprehensive set of versatile tools to design, develop, package, and deploy applications that support a range of use cases and connection states, from batch mode barcode scanning to database updates through casually connected, wireless WAN sessions.

GIVE THE FULL POWER OF YOUR BUSINESS INFRASTRUCTURE TO YOUR MOBILE WORKFORCE WITH THE MCL-COLLECTION.





MCL-Collection

FOR CIPHERLAB WINDOWS®-BASED MOBILE COMPUTERS

Extend the full power of your business to your mobile workforce

MCL-CLIENT



- ▶ Runtime module enables forward migration of existing MCL-based applications to the latest CipherLab Windows®-based mobile computers
- ▶ Instantly expands workforce capabilities with new mobile technologies
- ▶ Eliminates redevelopment efforts and accelerates solution deliveries

MCL-DESIGNER



- ▶ Drag-and-drop tools in a graphical development environment means fast, code-free application design
- ▶ Integrated simulator enables easy and quick code and functionality debugging
- ▶ Allows you to build highly effective applications, using all the functionality of CipherLab Windows®-based mobile computers

MCL-LINK



- ▶ Provides reliable, point-to-point communications based on direct-connect serial protocols (RS232 and USB)
- ▶ Enables sequential management of many mobile computers, one device at a time
- ▶ Gives your batch-based, mobile workforce applications the same host access support as your networked mobile computers

MCL-NET



- ▶ Communications server supports up to 62,500 simultaneously connected mobile computers
- ▶ Enables real-time, on-demand, or batch communications using continuously, casually, or occasionally connected sessions
- ▶ Allows you to optimize your network communications for the benefit of your entire mobile workforce—wherever they might be

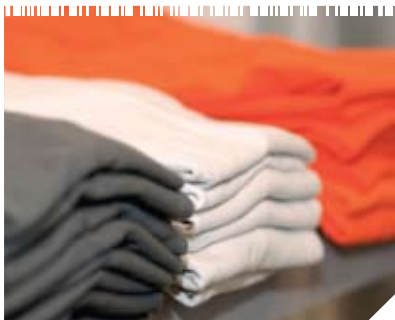
MCL-SAP® R/3® BRIDGE



- ▶ Bridges CipherLab Windows®-based mobile computer capabilities to your SAP® R/3® applications, bringing the power of your SAP® R/3® environment to your mobile workforce
- ▶ Allows you to tailor your mobile SAP® R/3® functions to your mobile workforce's tasks instead of over-delivering full SAP® functionality

WHEN LOGISTICS AND TRANSPORTATION HIT THE ROAD, SUCCESS IS GUARANTEED WITH RELIABLE, SECURE COMMUNICATIONS AND UP-TO-THE-MINUTE DATA.

MCL | COLLECTION
CipherLab Developer Software



RETAILERS KNOW THE VALUE OF THE RIGHT MERCHANDISE IN THE RIGHT PLACE, AT THE RIGHT PRICE— MCL MAKES IT EASY AND FAST.



ACCURATE, TIMELY AND POWERFUL DATA MANAGEMENT CAN MEAN THE DIFFERENCE BETWEEN LIFE AND DEATH, IN A HOSPITAL OR A BUSINESS.

MCL-Collection A Comprehensive Business Solution

With the MCL-Collection, it's easy to automate business management activities. The MCL-Collection's layered, open-standards-based architecture enables you to integrate just the tools you need across multiple mobile platforms and host business environments. And it allows you to easily migrate applications and quickly integrate new functionality as your mobile infrastructure evolves, saving on redevelopment costs and lowering your total cost of application ownership.

MCL-Collection supports multiple mobile client operating system environments, communications technologies, and host application environments, giving you a single tool for meeting your needs over a wide range: from host application software to end-point devices. It's easy to optimize MCL applications for speed, data accuracy, simplicity, reduced keystrokes, and minimal training. And the collection includes tools to support instant, real-time, or batch back-up data access for total flexibility across the wireless or wired network.

Extend the Power of Your Business Systems

Unlock the power of your mobile workforce for immediate results. The tighter you integrate mobile computers into your business systems, the more your people can accomplish—in the field, in the warehouse, on the road, or anywhere.

Migrate existing mobile applications. Deploy new, powerful CipherLab Windows®-based mobile computers using your familiar, proven mobile applications. Based on open industry standards, the MCL-Collection gives you incredible portability. You'll save time and redevelopment costs, while putting enabling tools into the hands of your mobile workforce faster and easier.

Develop new mobile extensions of your host applications. MCL-Client extends the efficiency and productivity of your host applications to CipherLab Windows®-based mobile computers using a runtime environment that executes mobile applications you develop with MCL-Designer. Now you can take full advantage of the advanced processing power, massive memory, and powerful data capture capabilities of the CipherLab mobile computers.

The MCL-Collection lets you bridge your business environment, whether it relies on ODBC compliant databases, SAP® R/3®, or others, to applications on CipherLab Windows®-based mobile computers. You can support a variety of connection modalities, including continuously and occasionally connected states, using wired and wireless technologies. The MCL-Collection gives you incredible flexibility and capability to support a wide range of uses and work environments.

THE MCL-COLLECTION IS A WORLD-TESTED
AND ENTERPRISE-PROVEN SOLUTION FOR
LEADING-EDGE BUSINESS COMMUNICATIONS

CIPHER LAB
Smarter



MCL-Collection

for Windows®-based mobile computers



9500 series CiperLab mobile computers now have MCL-Client and MCL-Link Lite factory-installed. Just power up to communicate with any MCL-based system. It's free and it's that simple!

MCL-Collection comprehensive solution	Single set of tools enables development and deployment of business applications across a wide range of end devices, including CiperLab Windows®-based mobile computers
Layered architecture	Integrate only the tools you need to extend your business applications for your mobile workforce
MCL-Designer: an intuitive, code-free development environment	Accelerates development and delivery of complex, highly functional applications
Migration wizard	Import, convert, upgrade, and enhance existing applications
MCL-Designer integrated simulator	Fast analysis and debugging of code
MCL-Client: runtime module	Quickly migrates your existing MCL-based applications to the newest CiperLab mobile platforms without redevelopment efforts
MCL-Link point-to-point communications server	Enables batch-mode devices with the same host access support as networked devices
MCL-Net networking server	Supports multi-modal network communications of up to 62,500 devices
MCL-SAP®R/3® Bridge	Bring the power of your SAP® applications to your mobile devices without over-delivering full SAP® functionality and processing overhead

Server minimum requirements for MCL-Collection modules	Operating system	Windows® XP (minimum recommended)	Windows® 2000	Win 98 (minimum recommended)
	Processor speed	233 / 300 MHz	133 MHz or higher	486DX 66 MHz
Memory	64 / 128MB	64 / 128MB	16 / 24MB	
Free hard disk space	80MB			
Display	800 × 600	VGA or higher		

©2010 CiperLab Co., Ltd. All specifications are subject to change without notice. All rights reserved. All brand, product and service, and trademark names are the property of their registered owners.



HEADQUARTERS
CiperLab Co., Ltd.
12F, 333 Dunhua S. Rd., Sec. 2
Taipei, Taiwan 10669
Tel +886 2 8647 1166
Fax +886 2 8732 3300
www.ciperlab.com

CiperLab China
Suite 1305, 1065A, Jaojiabang Rd.
Xuhui District, Shanghai,
China 200030
Tel +86 21 3368 0288
Fax +86 21 3368 0286

CiperLab USA
2552 Summit Avenue
Plano, Texas USA 75074
Tel +1 469 241 9779
Toll Free 888 300 9779
Fax +1 469 241 0697

CiperLab Central Europe
Willicher Damm 143-145
41066 Mönchengladbach
Germany
Tel +49 2161 56230 0
Fax +49 2161 56230 22